

### Features

- Powered by the Kohler hybrid energy system.
- Required for Memoirs® wall-mount touchless faucets.
- 0.5 gpm (1.9 lpm) maximum flow rate.
- On demand on and off. Maximum 30 second cycle time.
- Ideal for use with KOHLER vessels.
- Low-lead (SDWA) compliant.

### Material

- Brass.

### Technology

- Insight™ adaptive infrared technology.
- Includes one 3.6V size C Hybrid energy cell.

### Installation

- Optional spout-mounting location.
- Easy installation. Hybrid battery powered. It does not require AC connection.

### Recommended Products/Accessories

K-T11838 Wall-mount faucet trim w/Insight™ technology, no valve



ADA

CSA B651

OBC

### Codes/Standards

ASME A112.18.1/CSA B125.1

NSF/ANSI 372

ADA

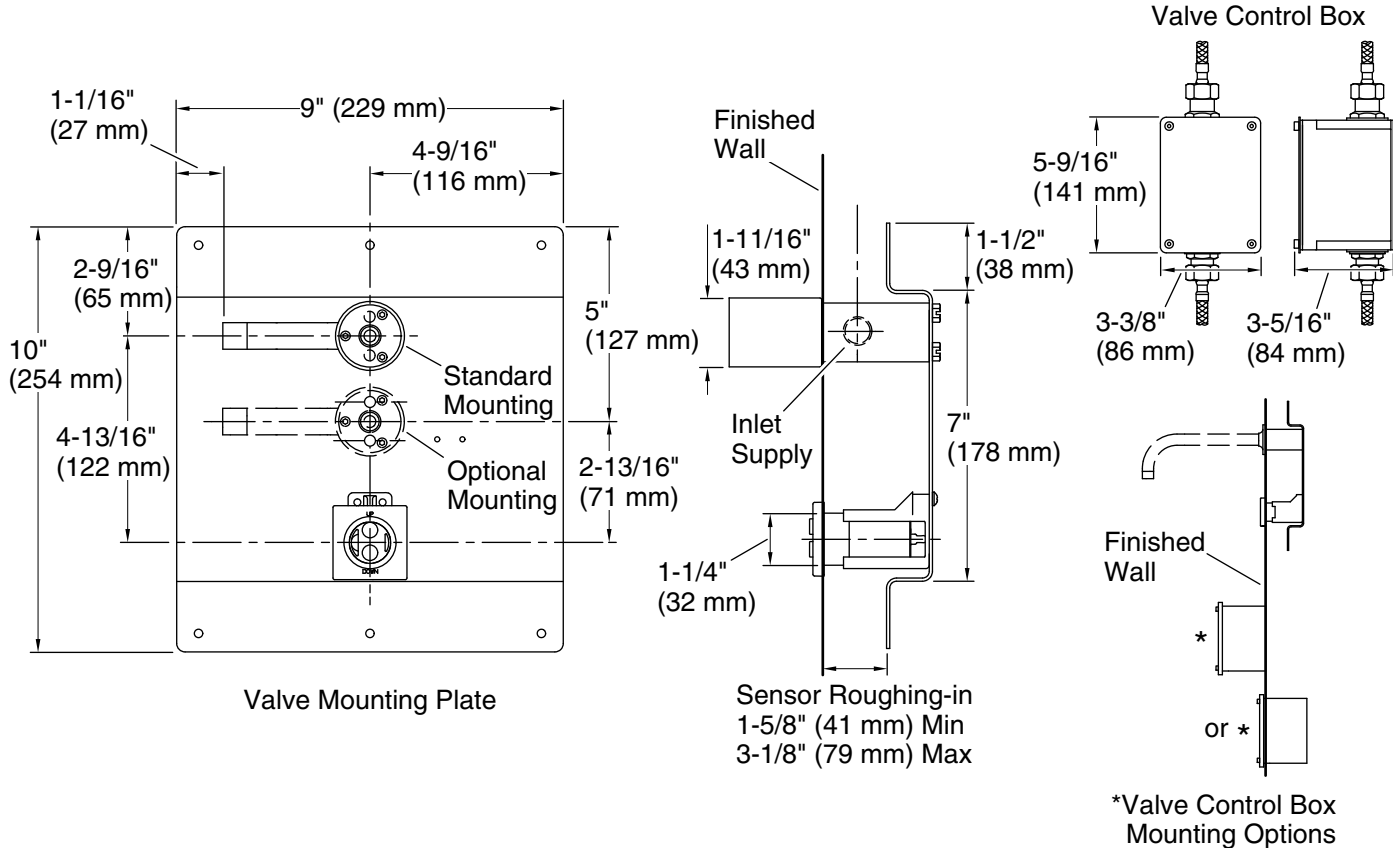
ICC/ANSI A117.1

CSA B651

OBC

### KOHLER® One-Year Limited Warranty

See website for detailed warranty information.



### Technical Information

All product dimensions are nominal.

Power source: Hybrid Energy Cell, included

### Faucet:

Flow rate: 0.5 gal/min (1.9 l/min)

Pressure: 45 psi (3.1 bar)

### Notes

Install this product according to the installation instructions.

Reference the installation instructions for specific framing information.

For use with faucet trim K-T11838.

Valve control box can be installed in the wall or on the wall.

ADA, OBC, CSA B651 compliant when installed to the specific requirements of these regulations.